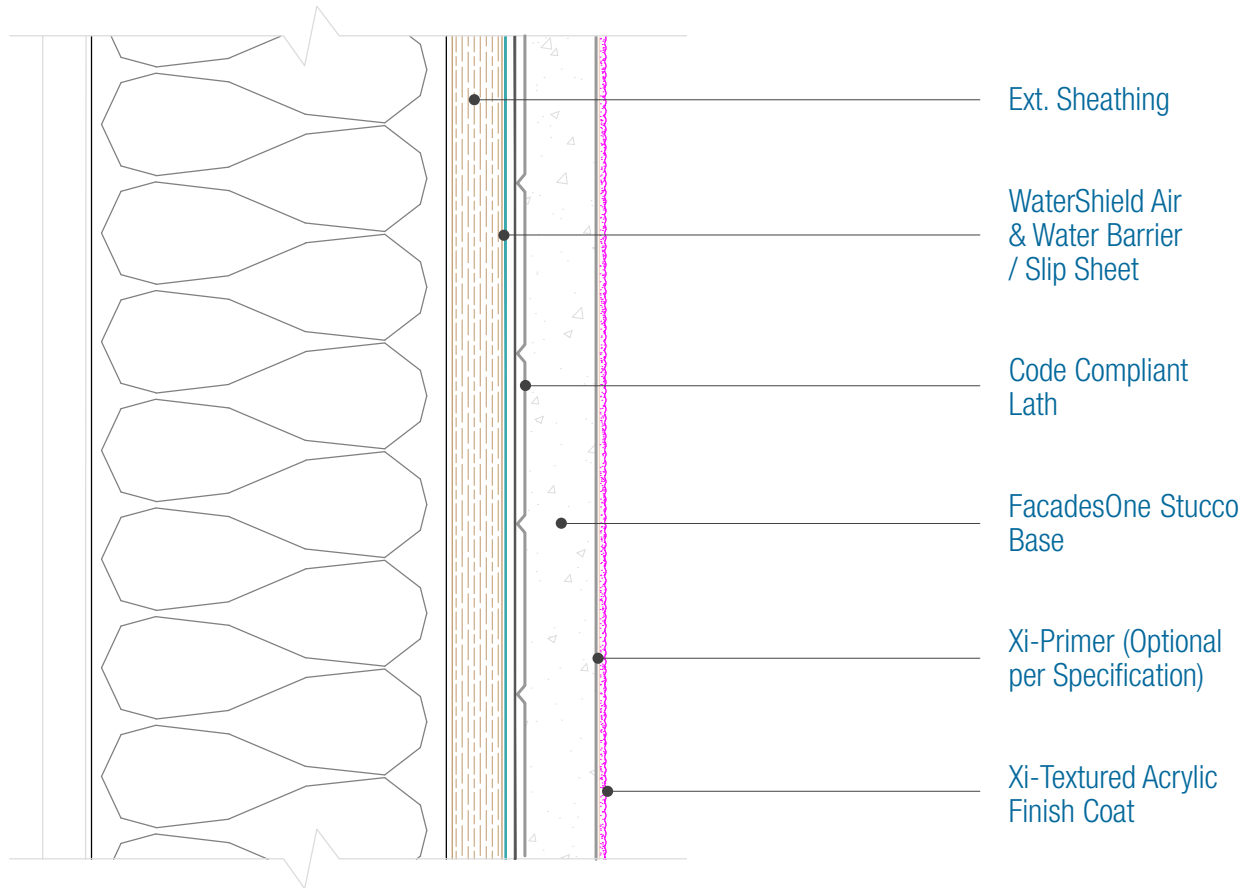




15262 Capital Port
 San Antonio, TX 78249
 1-800-611-6602
 facadesxi.com

FacadesOne WaterShield Stucco Assembly Assembly Components

Date: 11-23-2020 | Detail: F1WS.I.3 v1



Framing

- Wood
- Metal

Sheathing

- OSB
- Plywood
- Cement Board
- Fiberglass Faced Gypsum

Water /Air Barrier

- Xi-WaterShield
- WaterShield Joint Mesh
- WaterShield Flashing Tape
- Xi-FlashFill
- SlipSheet

Code Compliant Lath

- 2.5lb/yd² Expanded Metal Lath
- Woven Wire Lath
- Plastic Lath
- Per Specifications

FacadesOne Stucco Base

- FacadesOne Concentrate
- FacadesOne Sanded

Primer (Optional per specification)

- Xi-Alkali Resistant Primer

Xi-Textured Acrylic Finish Coat

- Smooth
- Fine
- Coarse

DISCLAIMER: FACADESXi details are recommendations that should be used for guidance only. There may be equivalent means of installation that are not shown in FACADESXi assembly details. All FACADESXi products shall be installed in accordance with FACADESXi product datasheets and all applicable building codes and industry standard practices. The design, engineering and final details incorporating any FACADESXi product are the sole responsibility of the project design professional. FACADESXi is not responsible for determining the acceptability and/or applicability of any FACADESXi product or detail for any specific project or condition. FACADESXi disclaims all liability for improper installation, workmanship, or design by a third-party. EXCEPT FOR ANY EXPRESS REPRESENTATIONS AND WARRANTIES BY FACADESXi, ALL IMPLIED WARRANTIES OF ANY KIND, INCLUDING BUT NOT LIMITED TO WARRANTIES OF MERCHANTABILITY OR FITNESS FOR A PARTICULAR PURPOSE OR COMPLIANCE WITH LAWS OR GOVERNMENT RULES OR REGULATIONS APPLICABLE TO THE PROJECT, ARE HEREBY DISCLAIMED. FACADESXi's website should always be consulted for the latest version of any details and/or product information. Contact FACADESXi for any technical assistance.